

# FALCON

powered by WebOS Hub



## Quick Start Guide

### FN-TV19-S

---

Please read this manual carefully before TV operation.  
Retain it for future reference.

\*For help on all features of the TV, there is an on-screen **User Guide**.  
To access the User guide , Press the **Settings** button, select **All Options**  
Then navigate to **Support** and select **User Guide**.

## PREFACE

1. Read this Quick Start Guide before starting Set-up.
2. Then, carefully follow the Instructions, heeding all Warnings.
3. Do Not remove the TV back cover or block the TV ventilation openings.
4. Do Not use the TV near water or a heat Source.
5. Do not pinch or cut the Power Cord.

**Note:**

The product and illustrations in this user's manual is only for explanation purposes and may vary depending on model.

---

## WARNING

---

Never place a television set in an unstable location. A television set may fall, causing serious personal injury or death. Many injuries, particularly to children, can be avoided by taking simple precautions such as:

- Using cabinets or stands recommended by the manufacturer of the television set.
- Only using furniture that can safely support the television set.
- Ensuring the television set is not overhanging the edge of the supporting furniture.
- Not placing the television set on tall furniture (for example, cupboards or bookcases) without anchoring both the furniture and the television set to a suitable support.
- Not placing the television set on cloth or other materials that may be located between the television set and supporting furniture.
- Educating children about the dangers of climbing on furniture to reach the television set or its controls

If your existing television set is being retained and relocated, the same considerations as above should be applied.

---

The plug or appliance coupler is used as the disconnect device, the disconnect device shall remain readily operable.



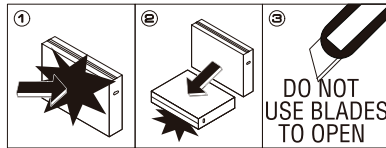
™ The terms HDMI and HDMI High-Definition Multimedia Interface, and the HDMI Logo are trademarks or registered trademarks of HDMI Licensing Administrator, Inc. in the United States and other countries.

# 1. Unpack the TV and Accessories from the Carton Box

1. Please see the unpacking instructions on the top of the carton box (and below).
2. As noted, be careful not to grab or put pressure on the TV screen.
3. Check the carton box carefully for all included Accessories.



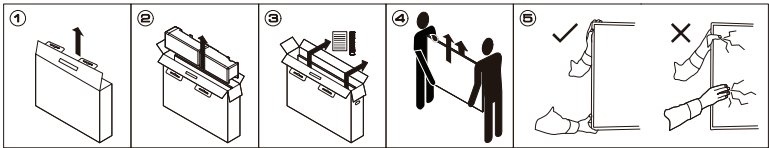
DO NOT



For 27" - 58"



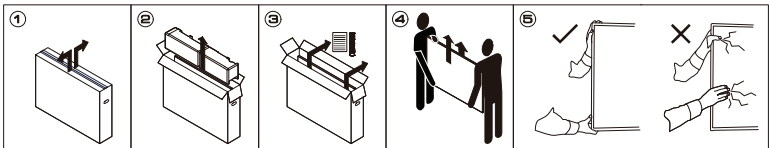
UNPACK  
WITH CARE



For 27" - 58"



UNPACK  
WITH CARE



## 2. Package Contents

- > LED television
- > Remote control with 2 AAA batteries
- > Red cigarette lighter
- > Quick Start Guide
- > VESA mounting screws
- > Power adaptor (12V, 3A)
- > Mini AV Cable
- > Base stand and screws
- > **DVD Remote with CR2025 battery**

## 3. What You Will Need for Set-up (Not Included)

- Philips Head Screwdriver
- Internet Connection (Needed for Smart TV Streaming)
- Wireless Router (Needed for Smart TV Streaming)
- Computer, Tablet or Smart Phone (Needed for Smart TV Set-Up)

## 4. Attach the Table Stands

How to assemble the stand

If you need to remove or assemble the stand please read the following instructions.

-Before attaching/detaching the stand, make sure to turn off the TV.

-Before performing work, spread cushioning over the base area to lay the LED TV on.

This will prevent it from being damaged.

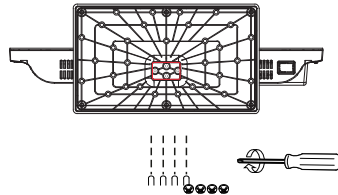
### Assembling instruction:

Put the television on the table, fix the stands with four screws given in the carton .

Step1: Fasten the base assembly with screws given in the carton.

Step2: Insert the assembled base into the hole, take out screws provided with TV set and tighten them into screw holes.

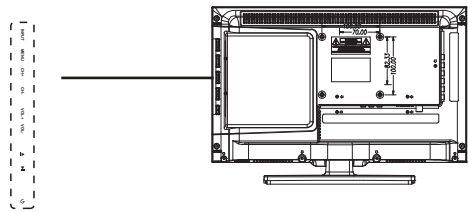
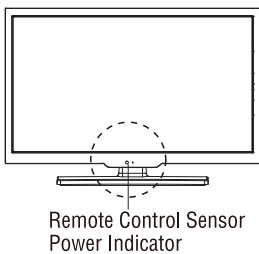
- To disconnect the stand from the TV, perform the above steps in reverse order.



## 5. Front panel

The buttons on the lower-right panel control your TV's basic features, including the on-screen menu.

To use the more advanced features, you must use the remote control.



## 6. Specifications

Model	FN-TV19-S	
Display size	19" Diagonal (max.)	
LED panel resolution	1366X768	
Speaker output power	≤5W	
Power supply	DC 10-30V	
Standby consumption	≤0.5W	
Antenna input	75 ohms	
Controller power	1.5V x 2 (Two AAA size batteries)	
Dimensions (LxWxH)	TV with stand	W438xD305xH153(mm)
	TV without stand	W438xD274xH52(mm)
Weight (Net weight)	TV with stand	2.75kg
	TV without stand	2.60kg
Work temperature	0°C-40°C	

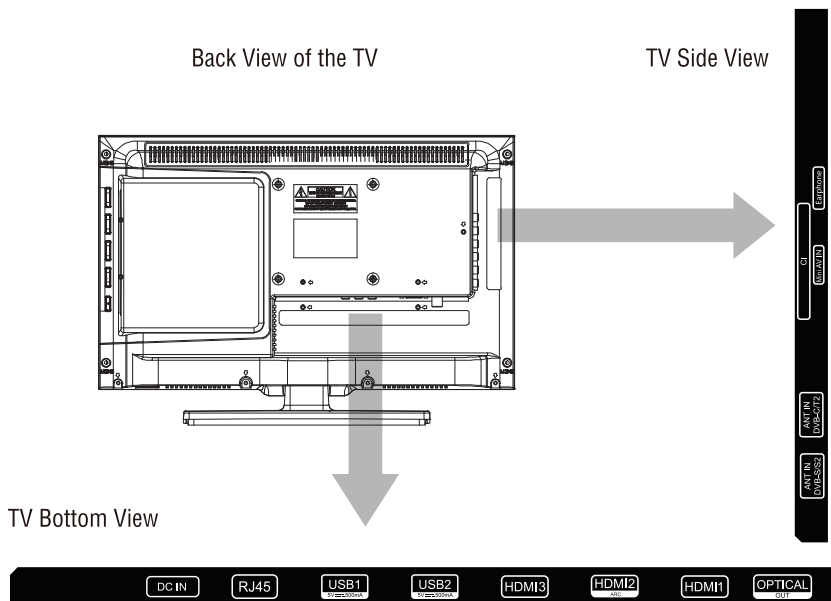
### NOTES:

- Design and specifications are subject to change without notice.
- Weight and Dimension shown are approximate.

## 7. Connect The TV

1. Insert the female end of the Power Adaptor into the back of the TV.  
Then carefully plug the standard AC plug end into a 230V AC outlet.
2. If you are connecting other devices to the TV, utilize the appropriate optional cables and connect to the appropriate ports on the back or side of the TV.

### Location of Connections

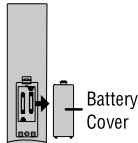


## 8.Prepare The Remote Control

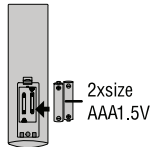
Remove the battery cover and insert the provided batteries. Then replace the battery cover.

### Installing Batteries

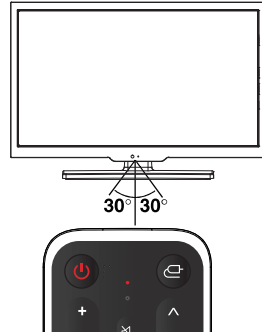
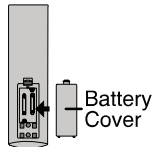
- 1 Open the battery compartment cover on the back side.



- 2 Insert two 1.5VAAAsize batteries in correct polarity. Don't mix old or used batteries with new ones.



- 3 Closed the cover.



- ✦ Point the remote towards the remote control sensor of the TV and use it within 8 meters.
- ✦ Put the used batteries into the recycling bin since they can negatively affect the environment.

Note:


- 1) Batteries should last approximately one year under normal use (actual use will vary).
- 2) If the TV will remain inactive for an extended period of time, remove the batteries from the remote control to avoid possible damage due to leakage.
- 3) Do not mix old and new batteries or different types of batteries.
- 4) Do not throw batteries into fire or water.
- 5) The batteries (battery pack or batteries installed) should not be exposed to excessive heat such as sunshine, fire or the like.



## 9. Remote Control




**POWER:** ON/OFF.

: Selects an input source.


**+/-** : It adjusts the volume level.

**^/∨** : You can change the program .

: Mutes the sound.

: Displays the Home menu.

:Voice input

: It displays the additional buttons on the remote control.

: Return to the previous menu / Exit the menu

: Enters the Quick Settings menu.

: Channel list.

**Netflix:** go to Netflix app.

**Prime Video:** go to Prime Video app.

**Disney+:** go to Disney+ app.

**LG Channels:** go to LG channels.

**Fplay:** go to Freeview Play app.

**Rakuten TV:** go to Rakuten TV app.

## 10. DVD Remote



POWER (red)	Switch DVD mode on/off
EJECT (green)	Ejects the DVD
SETUP	DVD mode settings
MENU	Opens the main menu
GOTO	Function key
NUMBER KEYS	For entering e.g. program numbers
▶	Start / Pause
■	Stop
◀◀ / ▶▶	Wind forward / Wind backward
◀◀ / ▶▶	Previous chapter / Next chapter
OK	Confirm selection

To play a DVD, please use the DVD remote control included in the delivery contents. You can use it to switch to DVD mode or back to TV mode via the power button on the DVD remote control.

In addition, the device automatically switches to DVD mode when you insert a DVD into the DVD slot provided for this purpose.

Operation in DVD mode depends on the data structure on the DVD.

For example, an original purchased movie will immediately switch to the main overview for playback.

### **Note:**

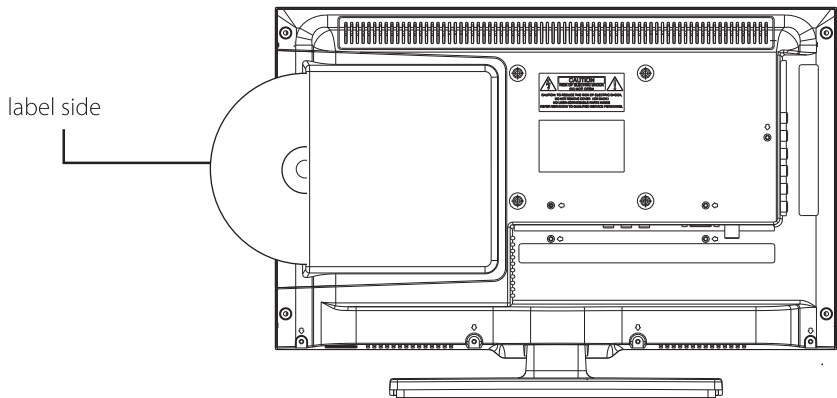
To put the DVD remote control into operation, please remove the battery contact foil by pulling it out.

## 10. DVD Operation

**Note:**

DVD mode is only possible if a suitable disc has been inserted. You can also switch to DVD mode under AV channel via the power key of the DVD remote control.

The DVD drive has an automatic feed. Insert the DVD into the opening of the drive with little effort. It will then be pulled in automatically. Make sure that the reflective side of the DVD is facing the screen. The labeled side (label) points towards the back.



After the DVD or CD has been inserted, the TV automatically starts playback or, in the case of a DVD, displays the respective on-screen menu.

To control the DVD and CD playback, please use the enclosed remote control!

## 11. Troubleshooting

### Having trouble?

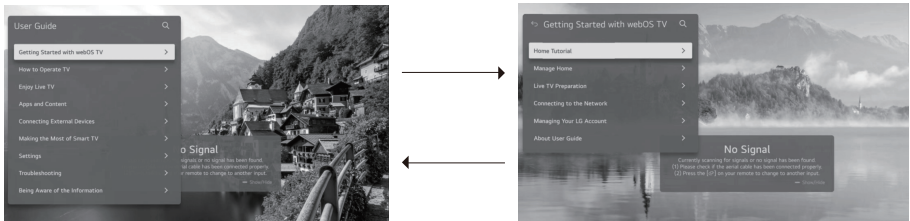
Don't worry, it's usually an easy fix.

---

After Auto Tuning only some channels are available	Check your area is covered by Digital Video Broadcasts. Try re-tuning or manually tuning missing channels. Check that you are using the correct antenna type.
Channel cannot be selected	Check if the channel has been blocked in the main menu settings.
USB not playing	Please check connecting USB cable and power supply is connected. Hard drive has not been formatted. Please make sure USB disk is compatible and the multimedia data formats are supported.
Picture is distorted, macroblock, small block, dots, pixelization, etc	Compression of video contents may cause distortion especially on fast moving pictures such as sports and action movies.
Noise from speaker	Check cable connections, make sure a video cable is not connected to an audio input. Low signal level may cause sound distortion.
TV turns off automatically	Check if the Off Timer is set to On in the Setup menu. Sleep Timer may have been enabled. If there is no signal for about 10 minutes from an input, the TV will turn off.
TV turns on automatically	Check if the On Timer is set to On in the Setup menu.
Picture is not shown in full screen	Black bars on each side will be shown on HD channels when displaying SD (4:3) contents. Black bars on Top & Bottom will be shown on movies that have aspect ratios different from your TV. Adjust picture size option on your external device or TV to full screen.

---

## WEE2.0

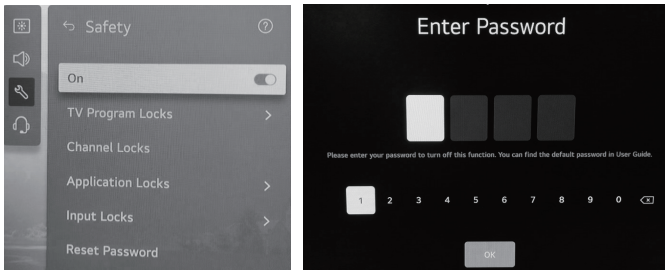


It provides guides related to TV manipulation, broadcasting, content utilization, device connection, smart functions, settings and problem solving so that user can refer to it when using TV.

You can watch the manual at the same time while watching TV or running the app. You can easily view the user's manual using the Description menu or Magic Explorer function.

## 12. Default safety password

You can enter the default password "0000" to turn on/off safety function.

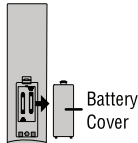


## 8. Prepare The Remote Control

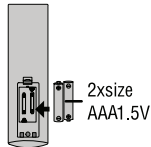
Remove the battery cover and insert the provided batteries. Then replace the battery cover.

### Installing Batteries

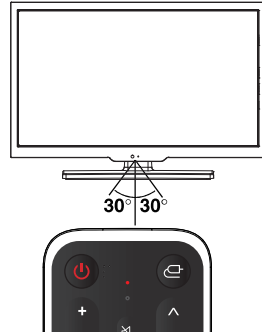
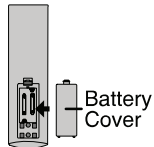
- 1 Open the battery compartment cover on the back side.



- 2 Insert two 1.5V AAA size batteries in correct polarity. Don't mix old or used batteries with new ones.



- 3 Closed the cover.



- ✦ Point the remote towards the remote control sensor of the TV and use it within 8 meters.
- ✦ Put the used batteries into the recycling bin since they can negatively affect the environment.

Note:


- 1) Batteries should last approximately one year under normal use (actual use will vary).
- 2) If the TV will remain inactive for an extended period of time, remove the batteries from the remote control to avoid possible damage due to leakage.
- 3) Do not mix old and new batteries or different types of batteries.
- 4) Do not throw batteries into fire or water.
- 5) The batteries (battery pack or batteries installed) should not be exposed to excessive heat such as sunshine, fire or the like.

## 13. Need more help?

This guide is just a quick setup guide for your TV. For more information and assistance regarding features and settings for your TV, an on screen User Guide is available in the **Settings** menu of your TV.



To access the on screen User Guide:

Press the Settings button  on the remote and Navigate to All Settings and then Support. Press User Guide

You will have access to on screen User Guides of all the features, settings and help to get the most out of your New WebOS Smart Camping TV.

You can also access the User Guide by Pressing the additional options button  on the remote.



[falcontechonology.co.uk](http://falcontechonology.co.uk)  
Support Email: [cs1@falcontechonical.co.uk](mailto:cs1@falcontechonical.co.uk)